



314 Route 108
Madbury, NH 03823
603 742 8733

Preliminary Hearing 314 Route 108

To: Madbury Planning Board

Submitted by: Sarah Greenshields, Owner
Kassidy Johnson, Academic Development Intern

Date: January 16, 2015

Dear Chairman of the Madbury Planning Board,

We respectfully submit the following sketches as part of a Preliminary Hearing to discuss our plans for a building addition to Little Tree Education located at 314 Route 108, Madbury. We are pleased to be presenting to the Board again – our last visit was in the fall of 2012, prior to the business opening in April 2013. As before, we look forward to collaborating with the Planning Board in order to ensure a final building design that matches the Town's long-term goals, while maintaining the safety and daily operations of our business, the members of the Little Tree Community, and the Citizens of the Town of Madbury.

As before, we will work very closely with Tom Perley, the Madbury Fire Chief, and Justin Corrow, the Building Inspector to meet the standards of health and safety, and building code. We do anticipate this being a design build project, and will align any modifications throughout the building process to ensure that quality and safety are the top priorities regarding any decisions, while satisfying Town Department requirements.

At this time, Little Tree Education is at capacity, serving 50 families daily. Within six months of opening, Little Tree Education reached full capacity, educating approximately nearly 75 children weekly, including children with part-time schedules. Due to the high demand for quality childcare, Little Tree Education retains eighteen employees, both full and part time. We are proud of our accomplishments as we approach our second Birthday. We see ourselves as a leader in early childhood education, a great place to work, and an overall positive addition to community.

Little Tree Education values the child above all else. We strive to provide experiences for our students, that fosters a love of learning from birth, and we strive to continually meet each child's unique development. As such, transitions between classrooms can be delayed, which prevents new families from joining our community. This, in addition to the high volume of applications, has resulted in a wait list for each classroom with families

anticipating enrollment. Currently, we have 30 families on the wait-list, and in December alone, we had over 35 inquiries.

We see this as being the best time to expand our building due to our established commitment to education, and the high need for quality childcare in the area. The proposed addition to Little Tree Education would increase enrollment by 25-35 students daily. This would also include the addition of 7-9 new staff members to our teaching team.

Attachments from our 2012 building project:

1. Site plan
2. Building layout
3. Building addition for front vestibule
4. Traffic study completed on October 1st, 2012 by Civilworks Engineering
5. Driveway permit

We also presented to the Zoning Committee, and Little Tree Education is zoned appropriately.

New Attachments:

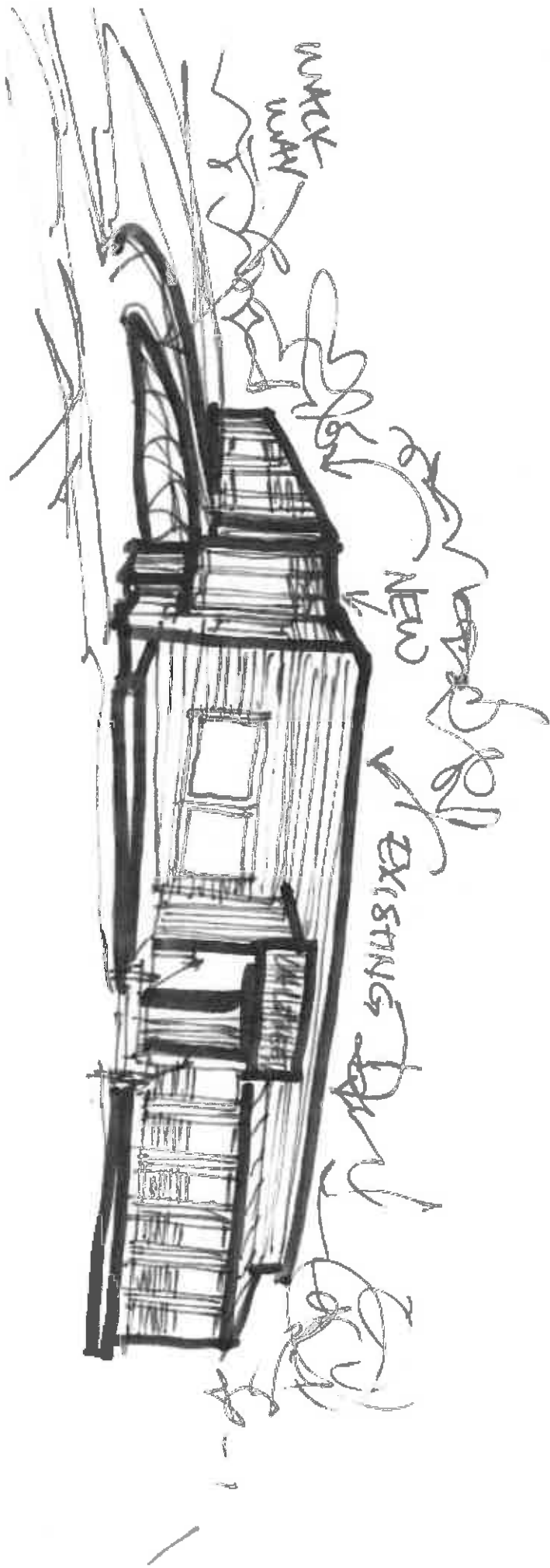
1. Sketches of the building addition, including a new office space, and classrooms. These sketches are not final, but rather a starting point for conversation.

Thank you for your time and consideration. We look forward to our dialog, and instructions on the following steps. Our goal is to complete construction on the addition by the start of the upcoming school year, in order to have families enrolled by September 1st, 2015.

Respectfully Submitted,

Sarah Greenshields

Kassidy Johnson



NEW
NEW

NEW

EXISTING

